

KOH 40-H High Power Fixture Guide

Indoor | Suspended | Output up to 2190lm

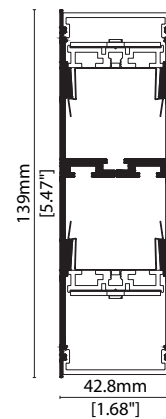


Key applications

- ✓ Ceiling
- ✓ Downlighting
- ✓ Indirect lighting
- ✓ Interior
- ✓ Office lighting
- ✓ Wall grazing

Key features

- ✓ Control Gear
- ✓ Custom lengths
- ✓ Decorative
- ✓ Diffusion: Homogenous
- ✓ Direct view
- ✓ Extensive CCT range
- ✓ High lumen efficacy
- ✓ IP40
- ✓ Lensed



MOUNTING METHODS



KKS-09 Suspension mounting kit



KKS-08 Ceiling rose



KKT-04 Joining bar/suspension kit

KOH 40-H High Power

Specification sheet

KKDC



Dimensions	H139/W42.8/L580-1700mm (H5.47/W1.68/L22.83-66.93in)
PCB Cut-point	560/1120/1680mm (22.05/44.09/66.14in)
LED Pitch	-
Chip	h-line CREE/Lumileds
Cover/Optics	Louvre + (Frosted/10°/20°/30°/Spread Lens)
CCT	h-line: 2200K/2700K/3000K/3500K/4000K/5000K
LED binning	h-line: 3-step MacAdam Ellipse (4-step @5000K)
CRI	≥ 90 (2700K/3000K) ≥ 80 (2200K/3500/4000K) ≥ 75 (5000K)
Lifetime	50,000 hours @ 25°C (50,000 hours @ 77°F)
Operating temp	$T_a = -20$ to 45°C (T_c max = 62.9°C) $T_a = -4$ to 113°F (T_c max = 145.2°F)
IP Rating	IP40
Finish	Matt Silver/Grey/White/Black/Bronze Powder Coated
Mounting	Suspended via suspension kit
Power feed	Male/female connectors
Control	0-10V/DALI (Integrated Power Supply)



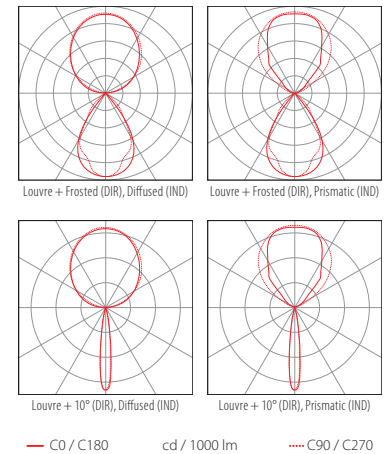
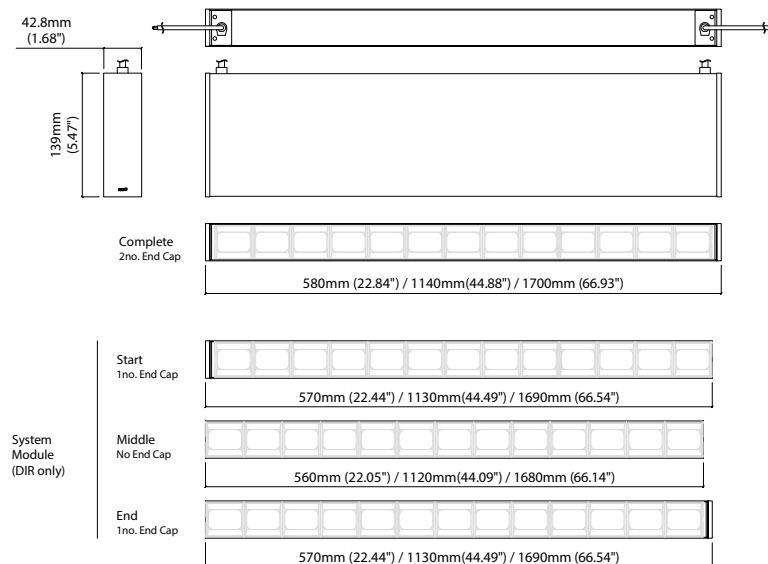
LED Grading Key

Exclusive Grade

h-line*	*KKDC tuned CCT range
Constant Voltage Lensed High Power LED	
3-step CCT range (4-step for 5000K)	

Power consumption	Supply voltage	Supply current	Power factor:
IND-31.1W/DIR-33.5W	240V AC 50Hz	0.14A	0.95 @ 239.99V, 50Hz

	Louvre + Frosted Lens (DIR)	Louvre + 10° Lens (DIR)	Louvre + 20° Lens (DIR)	Louvre + 30° Lens (DIR)	Louvre + Spread Lens (DIR)	Diffused Cover (IND)	Prismatic Cover (IND)	CRI	R9	Rf	Rg
h-line	870lm 27lm/W	2190lm 65.2lm/W	2150lm 64.1lm/W	1890lm 56.4lm/W	810lm 24.1lm/W	1830lm 54.7lm/W	2110lm 62.9lm/W	94	74	92	102



Data derived from independent UKAS/IESNA LM-79-08 accredited testing of production samples.

KOH 40-H High Power

Code Table



FIXTURE

Model	Finish	Cover	Grade	LED Type ¹	Colour (CCT)	Length Availability ²	Lens	Module Type*	Control Type	Input	
KOH 40-H (Diffused Indirect)	GC	Matt White Paint MW	T	h-h	High Power 957A	2200K ⁴ 22	580mm m 0580	Frosted lens FL	Complete FE	0-10V 4	AC 100V b
		Matt Silver Paint MS				2700K ³ 27	1140mm m 1140	10° 10	Start LE	DALI 3	AC 220-240V d
KOH 40-H (Prismatic Indirect)	GD	Matt Grey Paint MG			3000K ³ 30	1700mm m 1700	20° 20	Middle XE	No Controller 5	No PSU	I
		Matt Black Paint MB			3500K ⁴ 35	22.83in i 0022	30° 30	End RE			
		Bronze Paint BP			4000K ⁴ 40	44.88in i 0044	Spread lens SL				
					5000K ⁵ 50	66.93in i 0066					

¹ Refer to **LED Grading Key** on **Specification sheet** page

² Refer to **Length Availability List** or enter total run length instead of length code

³ 2700K/3000K – 90CRI

⁴ 2200K/3500K/4000K – 80CRI

⁵ 5000K – 75CRI

* Module Type (various fixture lengths)

Complete	FE	
Start	LE	
Middle	XE	
End	RE	

Code Example:

GC	-	MW	-	T	-	h	-	957A	-	30	-	m	1140	-	30	-	FE	-	4	-	d
KOH 40-H (Diffused Indirect)		Matt White Paint		Louvre (KOH)		h-h		High Power		3000K		m	1140mm		30°		Complete		0-10V		AC 220-240V

ACCESSORIES

Mounting Accessories

KKJT-04	Joining Bar/Suspension kit
KKSW-09	Suspension Mounting Kit
KKSW-08	Ceiling Rose

* Refer to **Mounting accessories** on **Accessories** pages

Connection Accessories

KKCN-26	Power Feed Cable
---------	------------------

* Refer to **Power feed** on **Accessories** pages

PSU/Driver

0-10V/DALI (Integrated Power Supply)

LED ENGINE VARIANTS (LED STRIP TYPE)

Colour	LED	Lumen/module	Wattage	Spec Doc	Length
Single CCT	630A	2110/module	16.3 (IND)/17.5 (DIR)	KOH 40-H High CRI	560/1120/1680mm (22.05/44.10/66.14in)
	957A	2190/module	31.1 (IND)/33.5 (DIR)	KOH 40-H High Power	560/1120/1680mm (22.05/44.10/66.14in)

* Performance data: (DIR), k-line, Prismatic Cover, 3000K, 580mm module

KOH 40-H High Power

Length Availability List



KOH 40-H High Power (IND)

Length Code		Fixture Length ¹		LED Strip ²		End Cap Dimension ³		Wattage (W)	Output (lm)
Metric	Imperial(US)	Metric	Imperial(US)	Metric	Imperial(US)	Metric	Imperial(US)		
m0580	i0023	580mm	22.83in	520mm	22.05in	10mm	0.39in	31.10	3000K (Test Data) 2107
m1140	i0045	1140mm	44.88in	1080mm	44.09in	10mm	0.39in	64.60	4214
m1700	i0067	1700mm	66.93in	1640mm	66.14in	10mm	0.39in	98.10	6321

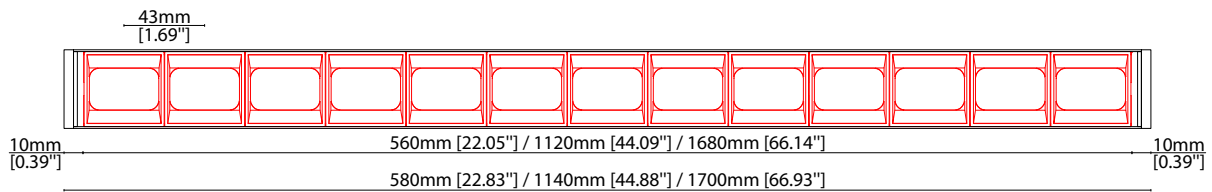
KOH 40-H High Power (DIR)

Length Code		Fixture Length ¹		LED Strip ²		End Cap Dimension ³		Wattage (W)	Output (lm)
Metric	Imperial(US)	Metric	Imperial(US)	Metric	Imperial(US)	Metric	Imperial(US)		
m0580	i0023	580mm	22.83in	560mm	22.05in	10mm	0.39in	33.50	3000K (Test Data) 2028
m1140	i0045	1140mm	44.88in	1120mm	44.09in	10mm	0.39in	67.00	4212
m1700	i0067	1700mm	66.93in	1680mm	66.14in	10mm	0.39in	100.50	6396

¹ Actual total overall length of light fixture (LED strip + end caps + void/wire hole)

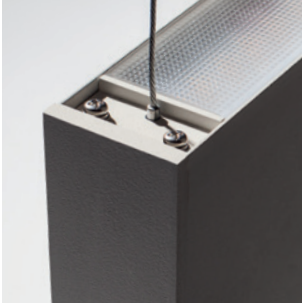
² Actual length of PCB strip

³ Actual length of 2x end caps



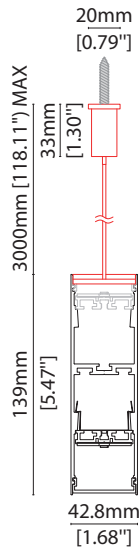
MOUNTING ACCESSORIES

Note: Accessories are to be ordered separately with corresponding code shown below.



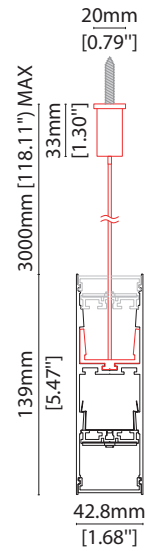
KКСW-09

Suspension mounting kit
(allow 2 per metre/40in)
Aluminium finish
W20/H3000mm
(W0.79/H118.11")



KКJT-04

Joining bar/
Suspension kit
(allow 1 per join)
L120/W42/H3000mm
(L4.72/W1.65/H118.11")



KКСW-08

Ceiling rose
Dia 127mm (5") x H 6.35mm (0.25")
Maximum weight 20kg per/kit

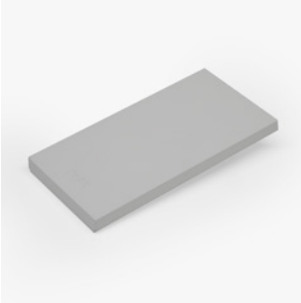
POWER CABLE



KКCN-26

Power Feed Cable

END CAPS AND LIGHT LEAK TAPE



- KKEC-S1 (2no.) - End cap pair (Mat white)
- KKEC-S2 (2no.) - End cap pair (Mat silver)
- KKEC-S3 (2no.) - End cap pair (Mat gray)
- KKEC-S4 (2no.) - End cap pair (Mat black)
- KKEC-S5 (2no.) - End cap pair (Bronze)



Black tape (prevents light leak)